

Listing Inventory September 2021

Click on the Interactive Links Below

TO SEARCH LOCAL LISTINGS

FOR SALE LISTINGS

OFFICE LEASE LISTINGS

RETAIL LEASE LISTINGS

INDUSTRIAL LEASE LISTINGS

LAND LISTINGS

**LNK
FOOD PLAZA**

**For Sale
3111 NW 12th Street**



Individual Members of:



1248 'O' Street, Suite 550
Lincoln, NE 68508
402 441 5800
naifmarealty.com

For Sale Listings

September 2021

[Return to Home Page](#)



2935 Pine Lake Rd. Units A, B, & C

For Sale
\$849,000
6,675 SF
Sally DeLair/Marc Hausmann
[Link to MRCIE #30751067](#)



903 Quarry Street Weeping Water

For Sale
\$2,900,000
4,656 SF plus 195 Acres
Jared Froehlich
[Link to MRCIE #30749350](#)



8001 S 13th Street

For Sale
\$2,490,000
16,958 SF
Marc Hausmann/Sally DeLair
[Link to MRCIE #30743174](#)



3111 NW 12th Street

For Sale
\$695,000
5,214 SF
Tom Graf/Jared Froehlich



1400 N. 48th Street

For Sale
\$1,395,000
9,840 SF
Mike Ball/Tom Graf
[Link to MRCIE #30333349](#)



1039 'P' Street

For Sale
\$1,400,000
54,000 SF
Tom Graf/Jared Froehlich



3248 Starr Street

For Sale
\$989,000
20,364 SF-Multi-Family
Marc Hausmann/Sally DeLair
[Link to MRCIE #30705652](#)



Heritage Park 5550-5600 S. 59th Street

For Sale
\$5,900,000 (7.2% Cap Rate)
45,054 SF
Sally DeLair/Marc Hausmann
[Link to MRCIE #30734567](#)

For Sale Listings

September 2021

[Return to Home Page](#)



2935 & 2949 N. 27th St.

For Sale
\$2,995,000
23,801 SF

Mike Ball

[Link to MRCIE #30677423](#)



800 N. 27th Street

For Sale
\$850,000 (6.1% Cap Rate)
5,664 SF

Richard Meginnis

[Link to MRCIE #30735200](#)



2900 NW 12th Street

For Sale
\$1,000,000
4,910 SF & 2.57 Acres

Richard Meginnis

[Link to MRCIE #30717714](#)

Office Lease Listings

September 2021

[Return to Home Page](#)



8055 Yankee Woods Drive

For Lease
\$16.75/SF NNN
3,000 SF

Jared Froehlich

[Link to MRCIE #30746094](#)



8001 S. 13th Street

For Lease
\$12.00/SF NNN
16,958 SF

Marc Hausmann/Sally DeLair

[Link to MRCIE #30743182](#)



1248 'O' Street

For Lease
\$20.00/SF FS
645-2,330 SF

Tom Graf/Richard Meginnis

[Link to MRCIE #30060791](#)



Welltower

575 S. 70th Street

For Lease
\$23.00/SF MG
2,176-18,159 SF

Jared Froehlich/Marc Hausmann

[Link to MRCIE #30725812](#)



Elizabeth Park Office 4433 S. 70th Street

For Lease
\$13.75/SF NNN
22,310 SF

Tom Graf/Richard Meginnis

[Link to MRCIE #30463586](#)



Taylor Meadows Medical 1101 S. 70th Street

For Lease
\$12.50/SF NNN
3,229 SF

Marc Hausmann

[Link to MRCIE #30073277](#)



650 J Street

For Lease
\$16.50/SF MG
1,028 SF

Sally DeLair

[Link to MRCIE #30654057](#)



Project Oscar 2.0 115 Canopy Street

For Lease
\$20.00-\$22.00/SF NNN
1,046-11,154 SF

Richard Meginnis/Sally DeLair

[Link to MRCIE #30345865](#)

Office Lease Listings

September 2021

[Return to Home Page](#)



Commerce Court 1230 'O' Street

For Lease
\$14.00/SF FS
1,049-12,881 SF

Tom Graf/Richard Meginnis

[Link to MRCIE #30060171](#)



570 Fallbrook Blvd.

For Lease
\$15.00-\$20.00/SF NNN
8,935 SF

Sally DeLair

[Link to MRCIE #30337123](#)



Meridian Park Office 6940 'O' Street

For Lease
\$20.00-\$21.00/SF FS
750-3,328 SF

Richard Meginnis/Tom Graf

[Link to MRCIE #30060429](#)



8033 S. 15th Street

For Lease
\$13.00/SF NNN
1,361 SF

Jared Froehlich

[Link to MRCIE #30710721](#)



Bryan East Medical Plaza 1500 S. 48th Street

For Lease
\$22.00/SF + Janitorial
1,104-4,950 SF

Mike Ball/Richard Meginnis

[Link to MRCIE #30060499](#)



Park One 2900 S. 70th Street

For Lease
\$16.00/SF NNN
2,644-2,750 SF

Tom Graf/Richard Meginnis

[Link to MRCIE #30060616](#)



601 P Street

For Lease
\$19.00-\$20.00/SF NNN
2,987-3,410 SF

Richard Meginnis/Sally DeLair

[Link to MRCIE #30525948](#)



5640 S. 84th Street

For Lease
\$16.00/SF NNN
12,735 SF

Tom Graf/Jared Froehlich

[Link to MRCIE #30476936](#)

Office Lease Listings

September 2021

[Return to Home Page](#)



Bryan West Medical Plaza 2222 S. 16th Street

For Lease
\$20.00-\$22.00/SF MG
3,872-4,883 SF

Mike Ball/Richard Meginnis

[Link to MRCIE #30058373](#)



U.S. Bank Tower 233 S. 13th Street

For Lease
\$18.50/SF SF
744-4,612 SF

Sally DeLair/Marc Hausmann

[Link to MRCIE #30058798](#)



Legacy Square 8055-8101 'O' Street

For Lease
\$11.00-\$13.00/SF NNN
740-3,998SF

Richard Meginnis/Tom Graf

[Link to MRCIE #30060853](#)



245 S. 84th Street

For Lease
\$10.75/SF NNN
924-5,694 SF

Mike Ball

[Link to MRCIE #30189674](#)



3901 Yankee Hill Road

For Lease
\$25.00/SF NNN
12,888 SF

Richard Meginnis

[Link to MRCIE #30597310](#)



Pine Lake Medical Plaza 3901 Pine Lake Road

For Lease
\$22.00/SF MG
812-2,876 SF

Mike Ball/Richard Meginnis

[Link to MRCIE #30060502](#)



7655 Archer Place

For Lease
\$20.50/SF NNN
1,532 SF

Jared Froehlich/Mike Ball

[Link to MRCIE #30670057](#)



4220 Lucile Dr.

For Lease
\$16.00/SF NNN
2,400 SF

Tom Graf/Jared Froehlich

[Link to MRCIE #30737861](#)

Office Lease Listings

September 2021

[Return to Home Page](#)



5055 'A' Street

For Lease
\$27.00/SF MG
3,368-17,514 SF

Mike Ball/Richard Meginnis

[Link to MRCIE #30060807](#)



575 Fallbrook Blvd.

For Lease
\$15.00/SF NNN
6,711 SF

Sally DeLair

[Link to MRCIE #30060567](#)



100 N. 56th Street

For Lease
\$16.50/SF NNN
3,026-26,400 SF

Sally DeLair/Marc Hausmann

[Link to MRCIE #30058312](#)



1640 'L' Street

For Lease
\$6.00-\$9.00/SF NNN
879-6,000 SF

Marc Hausmann

[Link to MRCIE #30060792](#)



307 N. 46th Street

For Lease
\$13.50/SF NNN
3,348 SF

Tom Graf/Jared Froehlich

[Link to MRCIE #30453979](#)



600 S. 70th Street

Land Lease or Build to Suit
See agent for rate
40,000-80,000 SF

Marc Hausmann/Richard Meginnis

[Link to MRCIE #30554041](#)



1128 Lincoln Mall

For Sublease
\$17.50/SF NNN
5,000 SF

Mike Ball

[Link to MRCIE #30666975](#)



3510 Village Dr.

For Lease
\$14.75/SF NNN
2,176 SF

Mike Ball

[Link to MRCIE #30674741](#)

Retail Lease Listings

September 2021

[Return to Home Page](#)



1300 N. 27th Street

For Lease
\$19.50/SF NNN
2,144 SF

Marc Hausmann/Sally DeLair

[Link to MRCIE #30752862](#)



1523 N. Cotner Blvd

For Lease
\$1,195/month MG
975 SF

Sally DeLair/Jared Froehlich

[Link to MRCIE #30751486](#)



201 Capitol Beach

For Lease
\$10.00-\$12.00/SF NNN
450-1,200 SF

Marc Hausmann

[Link to MRCIE #30060713](#)



Crossroads Center 233 N. 48th Street

For Lease
\$14.00/SF NNN
1,011-2,670 SF

Mike Ball

[Link to MRCIE #30059629](#)



505 N. 27th St.

For Lease
\$12.00/SF NNN
1,550 SF

Sally DeLair/Jared Froehlich

[Link to MRCIE #30705206](#)



The Shoppes at Piedmont 1265 S. Cotner Blvd.

For Lease
\$13.00/SF NNN
1,447 SF

Sally DeLair/Jared Froehlich

[Link to MRCIE #30552559](#)



Federal Trust Building 134 S. 13th Street

For Lease
\$14.50/SF MG
492-4,978 SF

Marc Hausmann

[Link to MRCIE #30060474](#)



Belmont Shopping Center 2541 N. 11th Street

For Lease
\$10.00/SF NNN
1,116-1,728 SF

Mike Ball

[Link to MRCIE #30060846](#)

Retail Lease Listings

September 2021

[Return to Home Page](#)



Meridian Park Retail
6900 'O' Street



1777 N. 86th Street
For Lease
\$13.00/SF NNN
2,415 SF
Sally DeLair/Jared Froehlich
[Link to MRCIE #30717961](#)



1745 'O' Street
For Lease
\$14.00/SF NNN
1,256-4,788 SF
Marc Hausmann/Sally DeLair
[Link to MRCIE #30514144](#)



6600 N. 27th Street
For Lease
\$12.00/SF NNN
4,300 SF
Marc Hausmann
[Link to MRCIE #30166444](#)



2000 Cornhusker Hwy.

For Lease
\$12.00/SF NNN
3,280 SF

Marc Hausmann/Sally DeLair

[Link to MRCIE #30725224](#)



1520 N. 20th Street

For Lease
\$8.75/SF NNN
25,810 SF

Marc Hausmann/Sally DeLair

[Link to MRCIE #30723617](#)



1850 Union Road Grand Island

For Lease
\$6.75/SF NNN
1,567-1,630 SF

Marc Hausmann/Sally DeLair

[Link to MRCIE #30388072](#)



1814 Pine St. Seward

For Lease
\$6.75/SF NNN
2,000-6,000 SF

Jared Froehlich

[Link to MRCIE #30675773](#)



5900 W. O Street

For Sale
\$4,826,000
73.86 Acres
Richard Meginnis
[Link to MRCIE #30725234](#)



18th & K Street

For Sale or Land Lease
\$3,250,000
73,018 SF
Tom Graf
[Link to MRCIE #30722972](#)



I-80, Exit 420

For Sale
Call For Offers
73.5± Acres
Marc Hausmann/Jared Froehlich
[Link to MRCIE #30611045](#)



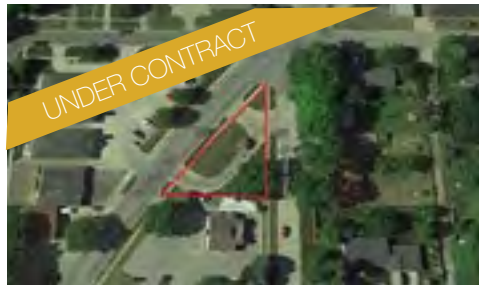
6400 N. 84th Street

For Sale
\$902,000
5.1 Acres
Richard Meginnis
[Link to MRCIE #30717724](#)



1915 N. Webb Rd.

For Sale
\$1,152,000
3.16 Acres
Tom Graf
[Link to MRCIE #30677138](#)



1220 N. Cotner Blvd.

For Sale
\$70,000
0.18 Acres
Tom Graf
[Link to MRCIE #30681367](#)



1850 Union Rd, Grand Island

For Sale
\$125,000
0.95 Acres
Marc Hausmann
[Link to MRCIE #30056372](#)

The Team

September 2021

[Return to Home Page](#)



Drew Stange, CCIM
CEO, Broker
dstange@naifma.com
(402) 441-5808



Richard Meginnis, SIOR
President
rmeginnis@naifma.com
(402) 441-5828



Mike Ball
Vice President, Sales & Leasing
mball@naifma.com
(402) 441-5807



Sally DeLair
Sales Associate
sdelair@naifma.com
(402) 441-5822



Tom Graf, CCIM
Sales Associate
tgraf@naifma.com
(402) 441-5823



**Marc Hausmann, CCIM,
SIOR**
Associate Broker
mhausmann@naifma.com
(402) 441-5834



Jared Froehlich
Sales Associate
jfroehlich@naifma.com
(402) 441-5830



Tim Dornbos
Sales Associate
tdornbos@naifma.com
(402) 441-5833



John Hyland
Sales Associate
jhyland@naifma.com
(402) 441-5819